

### A ENTRY

- EXISTING CONCRETE SURFACING TO REMAIN
- PLANTS WITH VARIOUS TEXTURES AND COLORS TO DENOTE ENTRY
- CONSIDER SIGNAGE AT DOORS

### B GATHERING/SENSORY AREA

- GROUND-LEVEL DECKING
- MOVEABLE ROCKING CHAIRS
- STORAGE FOR PILLOWS AND BLANKETS
- RAISED BED
- CONSIDER SHADE SAIL ABOVE

### C BUILDING AREA

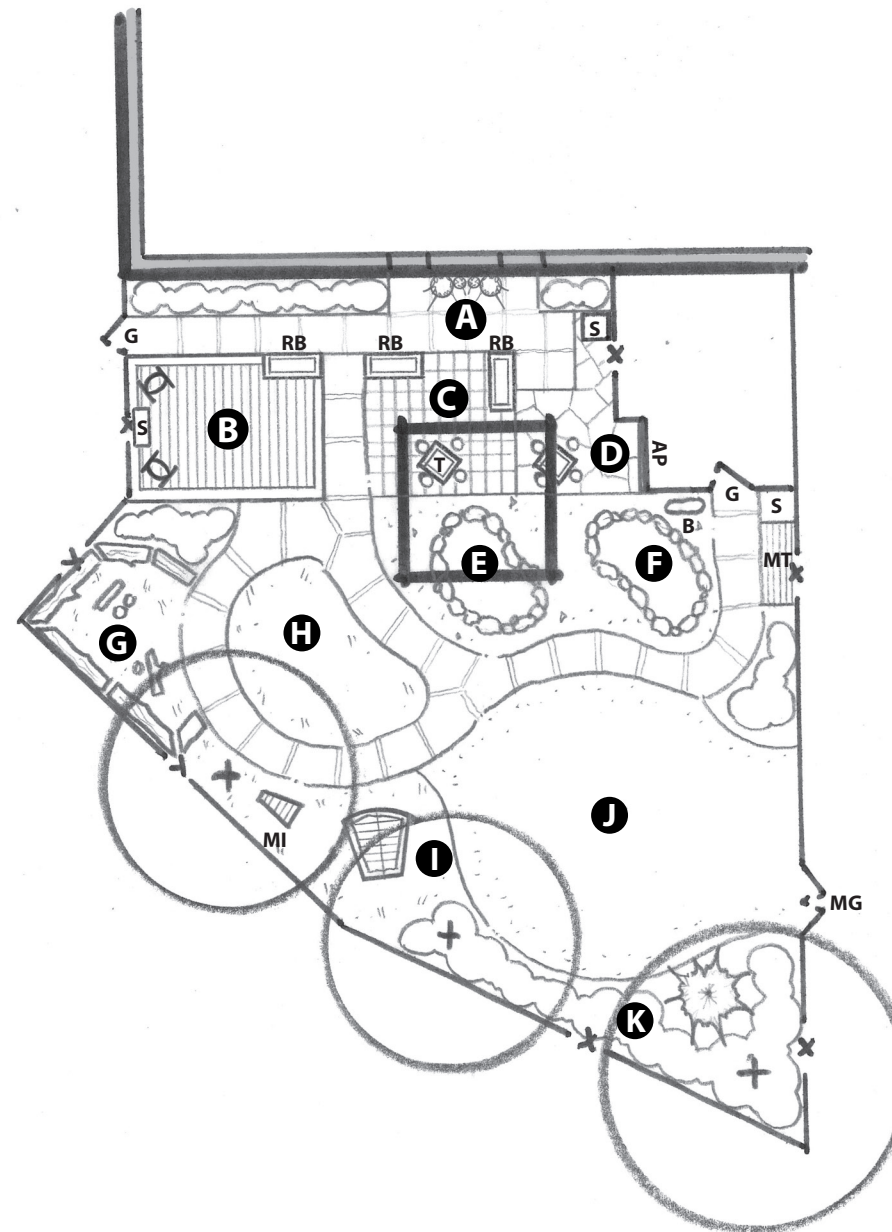
- RETAIN EXISTING SHADE STRUCTURE
- DISCOVERY TABLE AND SEATING
- RAISED BEDS
- MODULAR PAVER OR STAMPED CONCRETE FLOORING

### D NATURE ART AREA

- LOCAL/REGIONAL FLAGSTONE FLOORING
- NATURE ART TABLE AND STUMP SEATING
- ART PANEL
- STORAGE

### E SAND AREA

- IN-GROUND, SMOOTH STONE BORDER
- PLAY SAND TO MINIMUM 12" DEPTH
- EASY TO REMOVE COVER
- CRUSHED STONE SURFACING SURROUNDING



### F DIRT DIGGING AREA

- IN-GROUND, SMOOTH STONE BORDER
- LOOSE, FRIABLE SOIL TO MINIMUM 12" DEPTH
- STORAGE
- CRUSHED STONE SURFACING SURROUNDING
- NATURAL BENCH SEATING
- MUD TABLE WITH STORAGE BELOW

### G MESSY MATERIALS AREA

- ANCHORED NATURAL LOG PERIMETER
- GIANT TREE COOKIES/LARGE LOOSE PARTS
- STORAGE UNIT (OPTIONAL)
- ENGINEERED WOOD FIBER (EWF) SURFACING

### H CLIMBING & CRAWLING AREA

- TODDLER CLIMBING SET FROM COMM. PLAYTHINGS
- EWF SURFACING TO 9" COMPACTED DEPTH

### I MUSIC & MOVEMENT AREA

- PERMANENTLY INSTALLED INSTRUMENT
- ACCESSIBLE STAGE FROM WOOD OR COMPOSITE
- STORAGE FOR LOOSE INSTRUMENTS & SCARVES
- EWF SURFACING SURROUNDING

### J OPEN AREA

- RETAIN OPEN LAWN FOR PROGRAMMING
- MAINTAIN CLEAR ACCESS TO MAINTENANCE GATE

### K VEGETATED NOOK

- CHILD-SCALED
- CONSIDER WILLOW CUTTINGS OR SIMILAR

### LEGEND

AP: ART PANEL	MT: MUD TABLE
B: BENCH	RB: RAISED BED
G: GATE	S: STORAGE
MG: MAINTENANCE GATE	T: TABLE
MI: MUSICAL INSTRUMENT	

