

A ENTRY

- EXISTING CONCRETE SURFACING TO REMAIN
- PLANTS WITH VARIOUS TEXTURES AND COLORS TO DENOTE ENTRY
- CONSIDER SIGNAGE AT DOORS

B GATHERING AREA

- NATURAL BENCHES
- CRUSHED STONE SURFACING
- SHADE STRUCTURE ABOVE

C MUSIC & MOVEMENT AREA

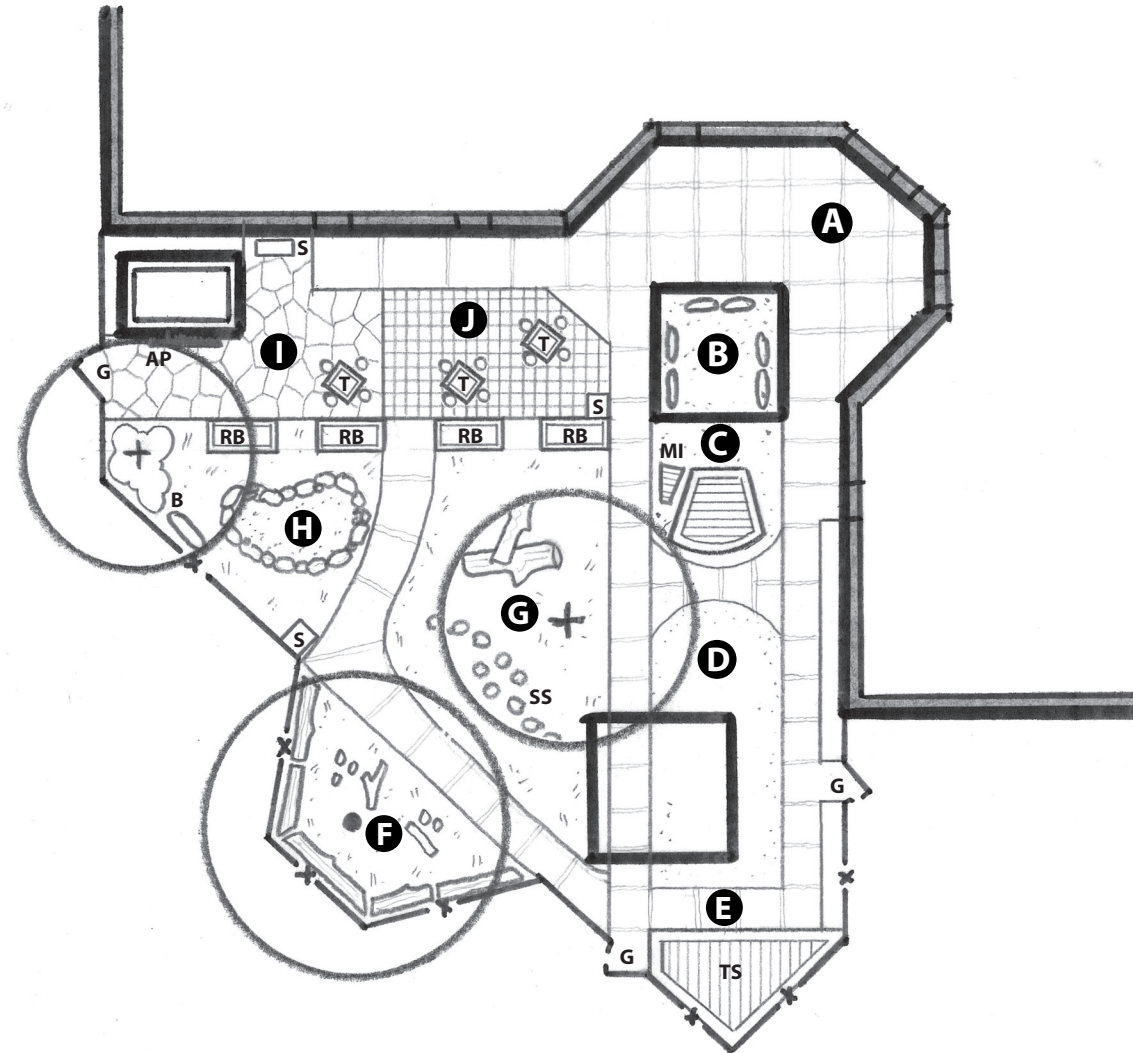
- PERMANENTLY INSTALLED INSTRUMENT
- ACCESSIBLE STAGE FROM WOOD OR COMPOSITE
- STORAGE FOR LOOSE INSTRUMENTS & SCARVES
- CRUSHED STONE SURFACING SURROUNDING

D OPEN AREA

- RETAIN OPEN LAWN FOR PROGRAMMING
- RETAIN ARTIFICIAL TURF, OR INSTALL DROUGHT-TOLERANT TURF

E WHEELED TOY PATH

- RETAIN EXISTING PATHWAY
- CUT OPEN AREA TO ESTABLISH SHORTER LOOP FROM CONCRETE OR GROUND LEVEL DECKING
- PULL-IN TRIKE STORAGE
- CONSIDER PAINTING CONCRETE TO DENOTE INTENDED PATH



F MESSY MATERIALS AREA

- MOVE FENCE LINE TO CAPTURE EXISTING MATURE TREE
- ANCHORED NATURAL LOG PERIMETER
- GIANT TREE COOKIES/LARGE LOOSE PARTS
- STORAGE UNIT (OPTIONAL)
- ENGINEERED WOOD FIBER (EWF) SURFACING

G CLIMBING & CRAWLING AREA

- PERMANENTLY INSTALLED LARGE HARDWOOD LOGS
- INSTALLED STUMP STEPPERS
- EWF SURFACING TO 9" COMPACTED DEPTH

H DIRT DIGGING AREA

- IN-GROUND, SMOOTH STONE BORDER
- LOOSE, FRIABLE SOIL TO MINIMUM 12" DEPTH
- STORAGE
- EWF SURFACING SURROUNDING
- NATURAL BENCH SEATING
- RELOCATE RAISED BEDS TO DELINEATE SPACE

I NATURE ART AREA

- LOCAL/REGIONAL FLAGSTONE FLOORING
- NATURE ART TABLE AND STUMP SEATING
- ART PANEL ON SIDE OF SHED
- STORAGE
- MAINTAIN CLEAR ACCESS TO EXISTING STORAGE

J BUILDING AREA

- DISCOVERY TABLE AND SEATING
- RAISED BEDS TO DELINEATE SPACE
- STORAGE
- MODULAR PAVER OR STAMPED CONCRETE FLOORING

LEGEND

AP: ART PANEL	S: STORAGE
B: BENCH	SS: STUMP STEPPERS
G: GATE	T: TABLE
MI: MUSICAL INSTRUMENT	TS: TRIKE STORAGE
RB: RAISED BED	

